

## Highlights aus dem Archivio Storico Ricordi



*Turandot*. Calaf. Kostümentwurf von Umberto Brunelleschi, Rom, Teatro Costanzi, 1926

## Highlights aus dem Archivio Storico Ricordi



*Aida*, 1. Akt, Kostümentwurf für Aida von Attilio Comelli für die Scala, 1904

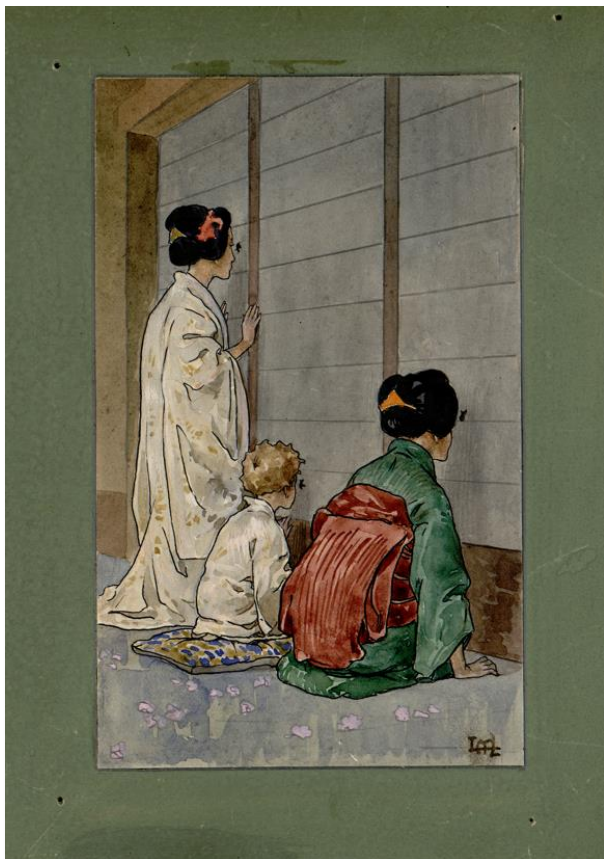


*Aida*: 2. Akt, Kostümentwurf für einen Wappenträger (Porta insegna) von Girolamo Magnani, Mailand, Teatro alla Scala, 1872



*Aida*: 1. Akt, Kostümentwurf für Radames von Attilio Comelli für die Scala, 1904

## Highlights aus dem Archivio Storico Ricordi



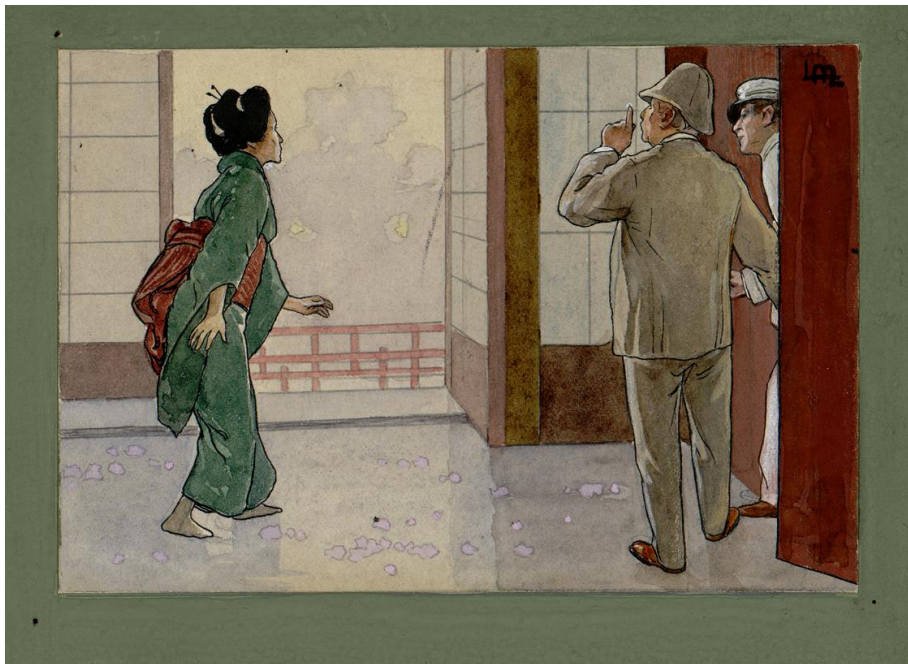
*Madama Butterfly*. Butterfly con il figlio e Suzuki, Aquarell von Leopoldo Metlicovitz für die von Ricordi produzierte Postkartenserie, 1904



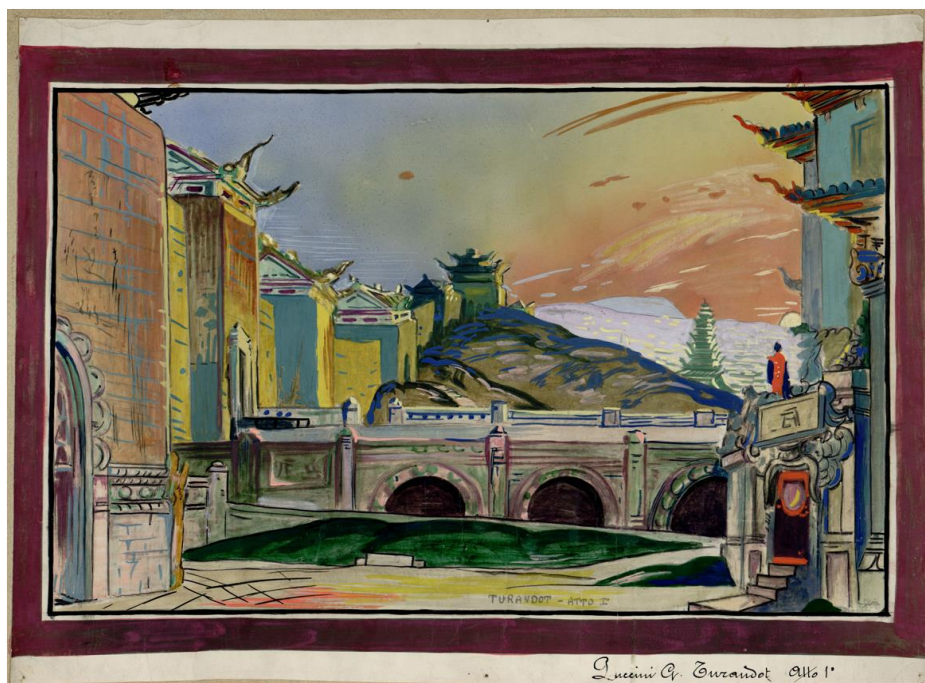
*Madama Butterfly*. Butterfly, 1. Akt, Kostümentwurf von Giuseppe Palanti, Mailand, Teatro alla Scala, 1904



## Highlights aus dem Archivio Storico Ricordi



*Madama Butterfly*: Suzuki con Sharpless e Pinkerton, Aquarell von Leopoldo Metlicovitz für die von Ricordi produzierte Postkartenserie, 1904



*Turandot*: Le mura della grande Città Imperiale, 1. Akt, Bühnenbild von Galileo Chini, Kopie für die Ausleihe, nach 1926

## Highlights aus dem Archivio Storico Ricordi



Giuseppe Verdi, Porträt von Leopoldo Metlicovitz, 1900



Giacomo Puccini, Fotografie von Pietro Paolo Bertieri, mit einer Widmung an Giulio Ricordi, Turin, 1900

## Highlights from the Archivio Storico Ricordi



*Turandot*. Calaf, costume design by Umberto Brunelleschi, Roma, Teatro Costanzi, 1926



# Highlights from the Archivio Storico Ricordi



*Aida*, Act I, costume design for Aida by Attilio Comelli for the La Scala edition, 1904

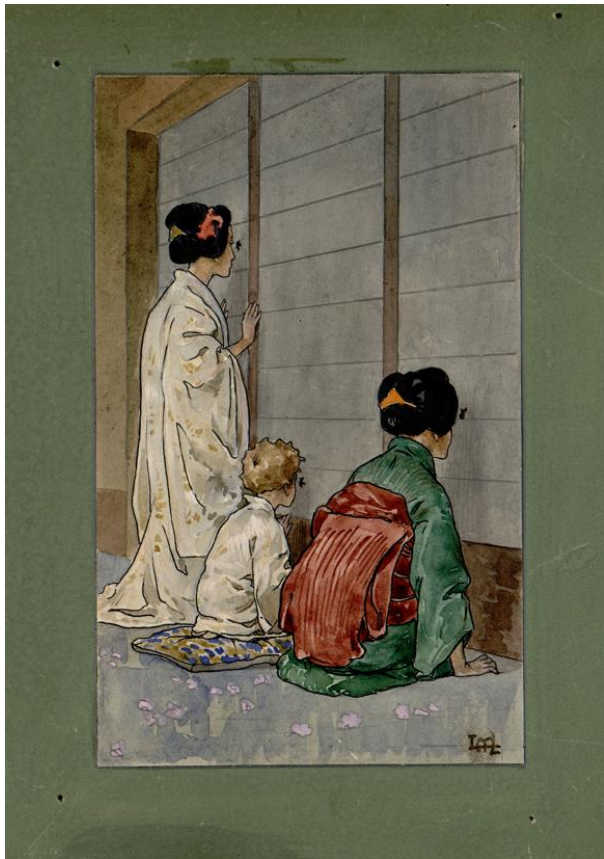


*Aida*: Act II, costume design for an Armiger (Porta insegne) by Girolamo Magnani, Milano, Teatro alla Scala, 1872

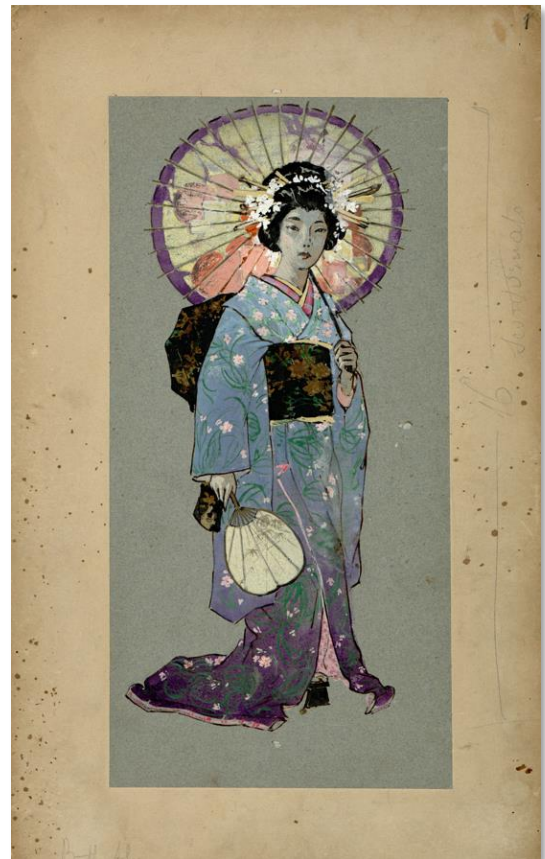


*Aida*: Act I, costume design for Radames by Attilio Comelli for the La Scala edition, 1904

## Highlights from the Archivio Storico Ricordi



*Madama Butterfly*. Butterfly con il figlio e Suzuki, watercolor by Leopoldo Metlicovitz for the series of the advertising postcards printed by Ricordi, 1904



*Madama Butterfly*. Butterfly, Act I, costume design by Giuseppe Palanti, Milano, Teatro alla Scala, 1904



## Highlights from the Archivio Storico Ricordi



*Madama Butterfly*: Suzuki con Sharpless e Pinkerton, watercolor by Leopoldo Metlicovitz for the series of the advertising postcards printed by Ricordi, 1904



*Turandot*: Le mura della grande Città Imperiale, Act I, set design by Galileo Chini, reproduction for rental, after 1926

## Highlights from the Archivio Storico Ricordi



Portrait of Giuseppe Verdi by  
Leopoldo Metlicovitz, 1900



Giacomo Puccini, photograph by Pietro  
Paolo Bertieri, Torino 1900, with a dedication  
to Giulio Ricordi